

The Newsletter of the SMR Users Group

Issue 13 - July 2002

1st August 2002

SMR News is produced by the DSU of English Heritage and is distributed free of charge to members of the SMR Users Group twice a year.

Editor Martin Newman. Tel: 01793 414718; e-mail: martin.newman@rchme.co.uk
English Heritage, National Monuments Record Centre, Swindon, SN2 2GZ.

An Introduction from the Editor

Martin Newman, English Heritage

It has once again been a very busy time in the SMR community with a number of events and developments since the last issue. A meeting was held at the Institute of Mechanical Engineers entitled "Historic Environment Records: Benchmarks for good practice" to introduce the project carried out by EH, ALGAO and Hawkshead Archaeology to a wider audience. Meetings were held in London and York for partners (including SMRs) in the OASIS project. There was also a very successful SMR User Group meeting in Warwick at which the latest title in the DSU Information sheet series, *Guidance for SMRs Applying for HLF Grants*, was launched.



Launch of the DSU Information Sheet at Warwick

The meeting also included a discussion on finds recording in SMRs and presentations on LBS Online, the SMR Content Survey and the Data Protection and Freedom of Information Acts, all of which appear as articles here. This issue also contains articles on Copyright issues in SMRs, the

capture of Scheduled Monument Data and the Portable Antiquities Scheme Data in SMRs. I hope you will find it interesting reading.

Since the first issue of SMR News in 1995 the publication has evolved, growing in size and variety of content. At DSU we are keen that it should continue to improve and reflect what users want. To this end it would be appreciated if you could answer the five questions sent out with this issue and let us know what you think.

Portable Antiquities Scheme and SMRs: A Way Forward

Andrew Sargent, English Heritage

The Portable Antiquities Scheme (PAS) wishes to see the data it gathers being used by SMRs for development control, contributing to research and understanding, and to service public enquiries. Last year I was seconded to the Scheme part-time to report on data transfer to SMRs. That Report made several recommendations, and I would like to highlight just a few linked recommendations in the areas of data transfer and access.

Data transfer

Initially the automatic transfer of data from the PAS database directly into the individual SMR databases seemed an option. This is not practical for a number of reasons:

- SMRs use different systems, and even HBSMR users may customise their versions;
- data must be managed - SMR officers require the facility to evaluate data, and to select records or fields and map them to their own system;

- SMRs want to use PAS data in different ways, from full integration into the SMR to running a stand-alone system on a GIS layer;
- many SMRs lack the necessary IT support to tag and migrate data.

Bearing these issues in mind, it is proposed that the Scheme should supply data to SMRs in a common format, leaving each SMR free to decide how it will use that data, which fields and records it requires, and how they map across. Recommendations include:

- data to be supplied twice a year as Access tables;
- XML is seen as a likely future development, though few SMRs currently have the IT expertise to handle it;
- PAS to consider developing software to help SMRs tag and load records;
- PAS to consider whether a full copy of the database, including finder information, should be archived, for example with ADS, with password access for participating SMRs.

Access

PAS is a voluntary recording scheme and as such depends on the goodwill of finders, the majority of whom are detectorists. Whilst the National Council for Metal Detecting (a national representative body for detectorists) supports the aims of the Scheme, it has concerns regarding the impact of 'uncontrolled' access to the data its members supply both on the hobby of detecting and on the archaeology. It could result in trespass, damage to property or theft which would annoy landowners and so reduce the opportunity for responsible detectorists to enjoy their hobby, while illegal detectorists would not report finds to PAS.

Concerns focus around locational information and dissemination via the web. There is a perception that the 'traditional' ways in which people have consulted SMRs – by letter or personal visit – are controlled and monitored, while electronic access is uncontrolled and unmonitored. It is therefore recommended that:

- a special class of 'sensitive site' should be tightly defined and justified on archaeological grounds to include newly discovered and productive sites, and the more important 'treasure sites'. This would be used very sparingly and reviewed regularly, and would be released by SMRs only for development control;
- all other PAS find spot records should be given a 4 figure grid reference on the web;
- for 'traditional' enquiries the full grid reference could be supplied.

The legal position appears to allow records to be withheld for justifiable reasons of site protection and

where the person supplying information did so voluntarily and has not consented to their disclosure - though this area of law is currently untested.

The full report is available to download from the SMR Forum archive at www.jiscmail.ac.uk/files/SMRFORUM/PA_SMR_Report.doc. Responses are invited and should be sent to andrew.sargent@rchme.co.uk.

The Data Protection and Freedom of Information Acts: Implications for SMRs

Paul Cuming, Kent County Council

The Data Protection Act (March 2000) and the Freedom of Information Act (November 2000) are two recent pieces of legislation that have provoked a significant amount of debate in the SMR community. The Acts concern access to information held by public authorities and other organisations and create new rights for the public and new responsibilities for the data holders. Both Acts are so new that they contain large grey areas and their interpretation has not yet been fully defined.

The Data Protection Act

The Data Protection Act (DPA) allows people to know what personal information is held about them, to alter it where it is incorrect and delete it where it is redundant or inappropriate. It also lays down the conditions by which public authorities may gather, maintain and use personal information but also identifies a number of exemptions from the requirements of the Act. The Act refers to both manual and automated data. All provisions apply to automated data but some categories of manual data are exempt until October 1998. Contravention of any of these rights could lead to prosecution and the Data Commissioner has extensive powers to investigate and enforce the DPA.

The Freedom of Information Act and Environmental Information Regulations

The Freedom of Information Act (FoI) provides a general right of access to all types of information held by public authorities whilst permitting a number of exemptions from that right. One such exemption is if the information requested is accessible by other means, even if only upon payment.

Under the Act, any person may make a request to the public authority for information and unless the information is exempt it must be supplied in a form of the applicant's choice. Even if the information is

exempt, however, the authority must consider whether it is really in the public interest to with-hold it and this spirit of accessibility is what underlies the entire Act. Public authorities are strongly encouraged to adopt a liberal approach to information and make it available unless limiting access is truly necessary

It is likely, however, that archaeological information will in fact be covered not by FoI but by new Environmental Information Regulations. The Regulations, currently out to public consultation, will come into force early in 2003. These govern access to environmental information and include “cultural sites and built structures”. The provisions of the draft Regulations are similar to those for the FoI Act but comprise a slightly different set of rights and exemptions. In particular the draft Regulations permit the with-holding of information where its release “would adversely affect the environment to which it relates”.

Implications for SMRs of Data Protection Act and the Freedom of Information Act/Environmental Information Regulations

It would seem unlikely that the DPA will cause SMRs too many problems as we store very little personal information. Nevertheless, to ensure that the Kent SMR complies with DPA we will carry out a number of actions:

- assess the extent of personal information in files for direct risk i.e. stand-alone and indirect risk, i.e. in combination with other KCC information
- remove redundant or unnecessary personal information
- de-personalise as much as possible, using organisation names where relevant
- put a data protection clause in future specifications and contracts
- put a data protection clause plus padlock symbol in questionnaires/forms
- prepare checklist for handling personal data

Similarly, the FoI Act/EI Regulations would not seem to cause major problems for SMRs unless they are particularly seeking to with-hold information. Most SMR information is freely available and so is unlikely to be the subject of a FoI Act/EI Regulations request. If a request for information is received then although the exemptions may be invoked, the Commissioner’s office has said (pers. comm.) that they would take a dim view of using them to systematically with-hold information. In general, if an SMR has an open access policy anyway then there should be no real problems.

For information on the Data Protection Act and Freedom of Information Acts see:
www.dataprotection.gov.uk/

A copy of the draft Environmental Information Regulations is available from:
www.defra.gov.uk/environment/consult/envinfo/index.htm

The Power Point presentation produced by Paul for the SMR User Group meeting in Warwick is available on the SMR Forum archive at
www.jisemail.ac.uk/files/SMRFORUM/data_protect_ion.ppt

The SMR Content and Computing Survey

Martin Newman, English Heritage

The intention to carry out a survey of content and computing in English SMRs was announced in SMR News 12. This has now been completed and the resultant report published. The Survey had a 95% return and covered what was being recorded (text and mapping), what archives were being held and which database and GIS systems were being used. The report then went on to draw conclusions, assess trends and make recommendations.

Selected Results

There has been a 25% increase in the number of SMRs since the Baker Report. This can be attributed to two factors: the Urban Archaeological Database (UAD) Project and Local Government Reorganisation creating new Unitary Authorities.

Types of Monument recorded was quite revealing demonstrating how some SMRs are diversifying from what was ‘traditionally’ recorded .

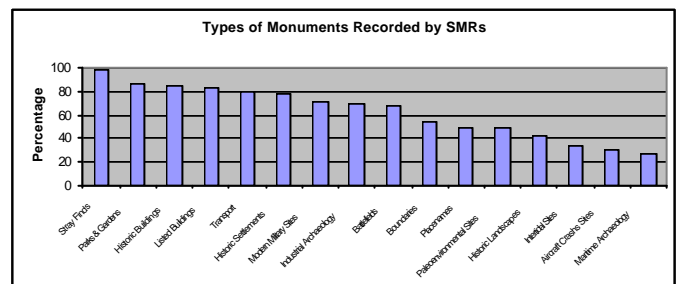


Fig. 1, Monument Types Recorded in SMRs

This is interesting to compare with the cut-off dates for recording, which showed 74% of SMRs with no cut-off date and 11% after the Second World War. Some SMRs, however, had cut-off dates in the 18th century or earlier.

The recording of protection status was looked at both in monument records and GIS. This showed that some SMRs are recording large areas of land as points rather than polygons. This raises concerns as

to the extent to which the full functionality of GIS is being utilised.

Analysis of archives held (see Fig. 2) shows the majority of SMRs holding material, whether originals or copies. Fieldwork archive is low but it is debatable whether an SMR is the appropriate repository for this.

Fewer SMRs in each case create source records for each type of material. This is worrying as it is essential for the Monument - Event - Archives model to be adhered to something which should probably be part of an SMR standard.

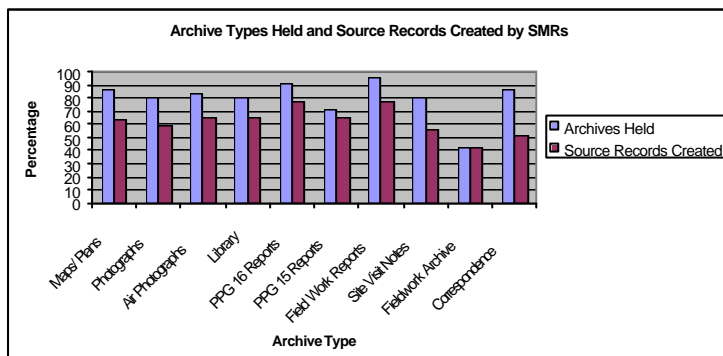


Fig. 2, Archives Held by and Recorded in SMRs

The computing results showed the dominant market share held by exeGesIS SDM Ltd with just over half using HBSM (v2) and SMR (v1.5) or migrating shortly. Similarly MapInfo and ArcView/ArcInfo dominate the GIS packages used with 52% and 24% respectively. This is partly due to the dominance of the exeGesIS systems which have GIS modules built in MapInfo and ArcView/ArcInfo.

Only 27% of SMRs have links to museums. Of these the dominant Collections Management System is MODES.

Other Conclusions

- Between 7% and 10% of SMRs are using systems built in obsolete versions of database packages and 6% remain un-computerised.
- SMRs are recording protection statuses relevant to their sites, but fewer have access to environmental designations.
- Newer SMRs often have narrower recording remits.
- There has been an increase in GIS use but there are concerns about how this is being utilised in some SMRs.

Selected Recommendations

- These results should be used in conjunction with MIDAS to define what SMRs should record for any standard

- The content of SMRs should be kept under review
- SMRs should ensure that they are using current versions of Software.

The survey has shown where SMRs currently are and highlighted where changes need to be made if they are to become the more holistic Historic Environment Records envisage in Power of Place.

The full report is available on the SMR Forum at www.jiscmail.ac.uk/files/SMRFORUM/SMR_Content_Survey_Report.pdf

Thanks are due to all the SMR Officers who took the time to complete the survey form, without their participation this research would not have been possible.

Statutory and Non-Statutory Status and Designation Research

Jason A. Siddall, National Trust

Research Aim

The project had one specific aim: to augment current local and national historic statutory and non-statutory designation terms in the National Trust SMR (NTSMR).

- It was hoped that this would provide a check on NTSMR terminology standards in this key lookup.
- Allow adoption of key external terms enabling easier exchange of information.

Statutory and non-statutory status and designation research scope

The NTSMR sent out requests to SMR Officers in England asking for the contents of the Protection Status/Grade lookups for monument. It would have been desirable to broaden the research to include the UK as a whole but time and resources did not allow this. Over 86% responded, all of which provided the content of their tables in some form or another.

Research results

A series of tables were produced that depicted the common terms used and any differences in terminology that been adopted for local and national designation terms. Over 87% of those that responded have added or edited new or existing designation terms. Many of these are locally derived or reflected particular operational requirements that the respondents have to fulfil.

Given that most respondents had made changes of some form or another it was necessary to identify the

preferred terms or any common terminology that was being used throughout England. The common terms were cross-referenced against one another.

The results from this exercise showed that there was little conformity of terminology for even national designations. With this in mind we were unable to develop an augmented list that would meet the aims of the project.

One such case is Scheduled Monuments. This designation is universal throughout England and there is very little scope for misunderstanding. The research we conducted showed over 14 different terms being used to record a scheduled monument (see Fig 1). Also 4 terms were general categories that used designation to record importance but did not record Scheduled Monuments as a designation. The above is a stark example of how little conformity there is within the terminology standards.

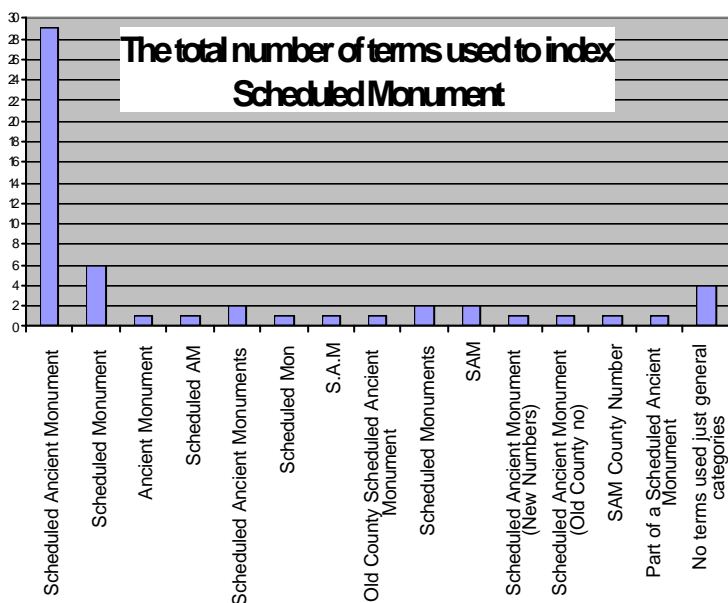


Fig. 1. The Terms used for Scheduled Monument

The wider implications of the project and conclusion

Originally the research we conducted was meant to augment our own lookups with new or accepted local and national terms, however the results meant that this was just not possible. It is notable that there seems to be so little conformity in terminology standards for even the most basic national designations. Although our systems and recording have developed over the years, there are still problems with our terminology standards.

For many years The National Trust has sought to download its information to county SMRs. Even with common systems it has proved a logistical nightmare for all concerned to map to numerous different terminologies being used.

I think it is not overstating the issue that the results of this project highlight a fundamental issue that has the prospect to hold our systems back. With the possibility of statutory status and the increasing web presence of our data I feel we must begin to try and develop common standards of terminology. As the owners of this content and as a community it is our responsibility to provide information that is open and understandable to as wider audience as possible.

Since we have become aware of these results we feel that a mechanism must be in place to develop national standards. In general terms only the results of this project have been passed onto FISH and the Data Services Unit. Hopefully the work of FISH (The Forum on Information Standards in Heritage) and the Inscription web site www.inscription.org.uk is no doubt a way to resolve the terminology issues. I would encourage all colleagues to become aware of the work that is taking place.

With the limited space available in this newsletter it is impossible to convey the full results or discuss the issues in detail. It is possible that a full report will be written to detail these results. I would welcome responses on this research and article.

Access to English Heritage Statutory Data Sets

Alphena Gordon, English Heritage

English Heritage (EH) has been capturing Scheduled Monument (SM) data in digital form since the mid 1980's. However, the Computer Mapping System (CMS), a CAD based system that was used for data capture up until 2000, became more limited and outdated as GIS technology improved.

These limitations which included mapping predominantly at 1:10,000 map scale, poor functionality and the inability to capture other EH data sets and the inability to exchange data with other organisations, led EH to seek other means of creating and maintaining its spatial data sets. In November 1999 the Heritage Spatial Information Service (HSIS) was launched. This was the result of a Private Finance Initiative (PFI) bid, with IBM as EH's partner. HSIS is based on Intergraph's Geomedia Professional GIS.

HSIS has provided EH with the opportunity to capture all of its spatial data digitally. In addition to SMs we have also captured Registered Parks & Gardens, World Heritage Sites and Registered Battlefields. A contract has been let for the provision of spatial references for all Listed Buildings (LB) in conjunction with the Listed Buildings Online Project. These grid references will be loaded onto

HSIS, providing a spatial data set for all 370,000 LB's by April 2003. In addition to this, all new LBs are being captured as polygons on HSIS. The resulting LB work will provide a complete digital spatial record of LBs for the first time.

The SM data from the CMS has been transferred into HSIS. Unfortunately, this was not in a GIS-useable format. As a result there are a number of data issues to resolve before this data can be useful within the HSIS environment. These issues include:

- The SM areas are just a series of lines and not closed polygons (see Fig. 1).
- The SM lines hold no meaningful attribution; significantly it does not know what it is or where it is.
- The labels identifying the SM's held all of the useful attribution.
- In a limited number of cases data from the CMS could not be exported to HSIS as a result of data corruption in the CMS.
- A change in the specification of the OS new 1:10,000 base map (see Fig. 1).



Fig. 1. An illustration of an unclosed SM polygon and problems associated with changes in the OS map base.

These issues need to be resolved to ensure that all SM data are correctly polygonised, attributed and follow the same data standards.

We have adopted a number of approaches to help to alleviate these problems.

- Through our involvement in the MAGIC project, we have been fortunate to have a member of DEFRA's GIS team seconded to us for a year. Using ArcInfo 8, the CMS data is being polygonised and attributed before being re-imported back into HSIS (Stage 1). It is hoped that this work will be completed by June 2003.

- We have employed a GIS specialist whose role is to revalidate the polygons created in Stage 1 against the new 1:10,000 map base (Stage 2). Where data is missing this will be recreated on HSIS (Stage 3). It is hoped that all of this work will be finished by April 2003.

All data sets created on HSIS are still generally captured at 1:10,000 scale. However, with the introduction of the OS Pan Government agreement, EH is moving towards mapping at the most appropriate scale. It is unlikely, however, that we will go back and recapture all existing records against a MasterMap™ base map.

As you can see we are working to improve our existing data sets and hope that by June 2003 we will be in a position where the data is much improved and we are able to exchange data with customers, including SMRs.

When these issues were discussed on the SMR Forum, a number of SMRs kindly offered copies of the digital SM boundaries they had created. Unfortunately this would not be of use as we need to use the original SM information, as this is the base data provided to the Department of Culture Media and Sport as part of the scheduling process.

The Geographical NMR

Brian Hopper and Ken Davies, English Heritage

The National Monuments Record (NMR) incorporates some 400,000 records of monuments in England and its territorial waters.

At its heart is the National non-intensive record set up by OGS Crawford and maintained until 1983 by Ordnance Survey and now including records from the National Buildings Record and the National Mapping Programme for sites recorded from aerial photography.

The NMR data is held in an Oracle text relational database, currently version 7.3.4, that only has a very limited geographic information functionality. There are plans to move the database into an "object" database - Oracle 8 in the near future. However, at present data loaded into HSIS has only simple geometry - points, beginnings and ends of lines and circles as the current Oracle software only records a single grid reference for each record (two for linear records). The use of Oracle 8 should enable a much more satisfactory combination of the textual and spatial elements of the NMR.

The illustration of data on Hadrian's Wall (Fig. 1) shows that once NMR data is loaded into HSIS it can

be edited to provide a record which has both more geographical intelligence. However, it also illustrates that the scale in which data is captured and displayed is an important consideration for GI compilers and users alike. For example data that has been captured at 1:2500 and displayed using 1:10,000 raster as the backdrop.

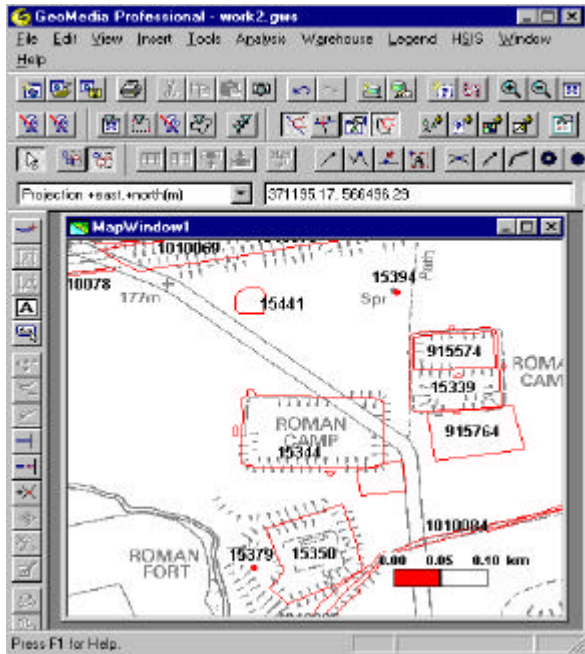


Fig.1, Sites on Hadrian's Wall as depicted in HSIS

Also the differing level of both survey accuracy and precision causes problems. For example current NMR field survey data is recorded using GPS while the OS data to which it is "best fitted" can have been captured using various capture methods and, in some cases, is data that has not been systematically revised for some time. In addition the current OS programme of positional accuracy improvement could, in the short term, provide more problems than answers.

The development of a consistent universally recognised Metadata standard should make this situation clearer and inform both suppliers and users on how to compile and make available spatially referenced data.

However, it should not be forgotten that all cartography involves an element of fudge and that standards should concentrate on data being "fit for purpose". The different capture scales, method of capture, accuracy and precision and age of the data sets will make ideal solutions something of impossibility.

There is currently a programme to edit the data held in HSIS, with the editing of linear records, such as Roman Roads, given some priority. Also emphasis is given to records required for fieldwork and by the

NMR's Enquiry and Research Services team. See figure 2 which shows an example of a distribution map of the Solent area, showing both terrestrial and maritime sites recorded in the NMR and held within HSIS.

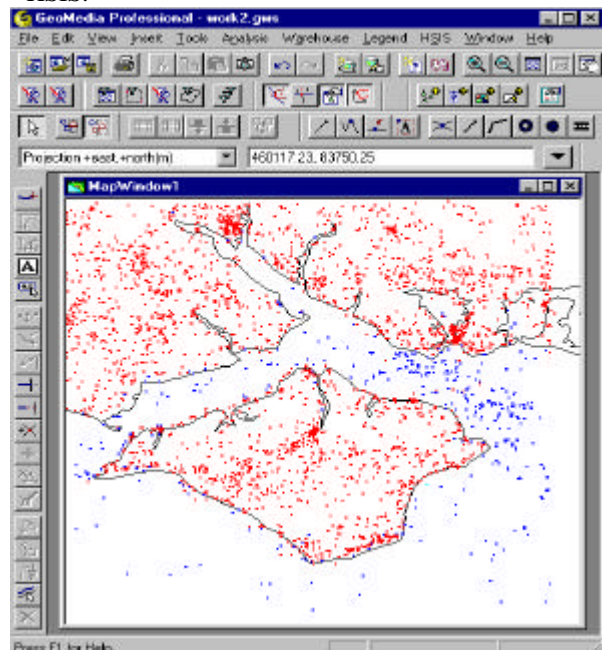


Fig. 2, Distribution plot of NMR sites in the Solent

HSIS makes it possible to view many disparate data sets together and in using them improve the quality of the data. It will enable us to create a richer more spatially intelligent record as more data is incorporated from a wide range of sources both within EH and outside. For example this could include archaeological and aerial survey information which will include rectified photographs and both vector and raster versions of field surveys. Other cartographic products such as soil maps could also be included.

The development of a corporate GIS has enabled EH to become more fully involved in "joined up" government initiatives such as MAGIC and the Planning Portal. We already supply heritage data to OS both for inclusion in the topographic archive and on published mapping. Input of data into HSIS will enable the NMR to be fully involved in the development of the heritage layer in MasterMap™¹.

Please contact brian.hopper@rchme.co.uk for further information about the use of HSIS at the NMR, cartography, GIS technology or spatial data standards.

¹ MasterMap™ is the new definitive product based on the OS topographical archive and is gradually replacing Land-Line® as the OS large scale digital product.

Database Rights and Copyright

Sarah Fricker, Bond Pearce Solicitors

When compiling a database, there will probably be two main issues concerning its creator, one being whether he can prevent third parties from copying it, thereby taking unfair advantage of his hard work, and two, whether he has all the necessary rights to include the data.

English law goes some way to protect the database. Traditionally this was done under copyright which prevented a third party from copying all or a substantial part of the database without the owner's consent on the basis that a database fell within the definition of "compilations". This approach was widely criticised on the grounds that rights existed for a considerable period (70 years from the author's death) and very little creativity was needed to obtain protection. There are documented cases where items like telephone directories were protected.

On 1 January 1998 a new and specific right was introduced for all databases, as the terms is defined in the Copyright and Rights in Databases Regulations 1997. The owner of the rights, which last for 15 years from the database's creation or publication, has control over the extraction (copying) and reutilisation (making available to the public) of all or a substantial part of its contents. The owner will be the person who is adjudged to have made a substantial investment in obtaining, verifying or presenting the database's contents and the recent case of *William Hill v British Horseracing Board* suggests that any copying could be "substantial" if it is "useful".

Since the recent changes, a database may still be entitled to copyright protection (if the selection or arrangement of its contents is sufficiently original) and/or could also have the benefit of database rights. Which rights apply depends on the facts of each case. Once the database has been created it is important to ensure that those rights are protected properly, in particular that any permissions given to third parties deal with the relevant rights.

The other issue mentioned at the start of this article concerns third party rights. These will be relevant when someone owns the information included in the database other than the database's creator, such as where the database's contents are purchased from another source. Some examples of where permission may need to be obtained are where items like photographs, essays and articles are included. Permission may be unnecessary, for example if only an insubstantial part of a larger work is copied or the material is particularly old (where its copyright may

have expired). Using third party's materials is very common and it is vitally important that it is established whether permission is needed. If so, it should be obtained before the documents are incorporated. If possible permission should be in writing and it would be a prudent to obtain legal advice on this area. Getting it wrong can be expensive.

Please contact Sarah Fricker, a solicitor for Bond Pearce solicitors, Bristol Bridge House, Redcliff Street, Bristol BS1 6BJ, telephone number 0117 929 9197, if you would like to discuss anything in more detail.

Progress with LBS Online

Duncan Brown, English Heritage

English Heritage is now web-enabling the national database of Listed Buildings (LBS). Our aim is to have a facility available to Local Authorities and National Amenity Societies on the web by October 2002.

The project falls into three parts:

1. Developing LBS: upgrades to support the rest of the project.
2. The LBS Online web site: to provide rapid access to the current dataset for local authorities' conservation and planning professionals. Users will be encouraged to submit amendments to listing details via structured feedback, to assist English Heritage and DCMS to keep the Lists up to date. Web resources to provide access to the online lists for the public are currently at the planning stage.



The Front Page of the LBS Online Web Site

- Data on CD: full data for each authority area on CD in xml format, the e-government approved format for transfer of data. Supplied in the first instance to every registered authority; SMRs who provide cover for several, or neighbouring authorities will receive all the data they need. Information supplied will be licensed for dissemination to the public.

Several local authorities have already been helping with the early stages of the development, and we would particularly like to thank Kent County Council and Birmingham City Council for their help with this project.

In September, SMRs will be invited to test the web site. We will also be inviting comment on the xml schema and methods of data supply from both exeGesIS SDM and from SMR officers. Please watch SMR Forum for an announcement and details of trials and the xml consultation.

If you would like more information about the LBS Online project please contact Duncan Brown at duncan.brown@rchme.co.uk.

Defence of Britain Data for SMRs

Martin Newman, English Heritage

As you are probably aware the Defence of Britain (DoB) project was committed to making its data available to SMRs. The project has now come to an end and the resultant Access databases (*Anti Invasion Defences* and *Non Anti Invasion Defences*) have been sent to the NMR. The Anti Invasion Database contains detailed recording of WWII defences. The Non Anti Invasion Database holds more basic recording of other 20th century military sites.

The Non Anti Invasion Defences Database

The NMR has now written to every SMR offering a copy of both databases on CD asking them to confirm in writing or by e-mail if they would like a copy. How this data is used/incorporated will be the responsibility of individual SMRs. If you have not received your letter or are yet to reply and would like to receive a copy of the data please contact martin.newman@rchme.co.uk. It is planned to start sending out the CDs next month.

News

User Group

RCHAMS have offered to host the next SMR User Group meeting, scheduled for December, in Edinburgh.

People

Richard Hobbs has left Portable Antiquities Scheme, and has been succeeded as Outreach Officer by Michael Lewis. Roger Bland has left the DCMS to return full-time to the British Museum

Gil Burleigh, the Archaeologist for North Hertfordshire DC left the council Museum Service in June.

Alessandra Holly has joined the Hampshire Archaeology & Historic Buildings Record (AHBR) as Assistant Archaeologist and Bob Edwards has left.

Chris Wardle has changed job, he is now the Historical Environment Officer (Archaeology) in Staffordshire and will be handling development control/land use work. He has been succeeded at the SMR by Jo Mackintosh who is the new Historic Environment Records Officer.

There are three new members of staff at Herefordshire SMR, they are, Melissa Seddon, SMR Officer (job share with Rebecca Roseff), Toria Moser, SMR Education Officer (part time) and Miranda Greene, SMR New Audiences Officer (full time).

Nial Hammond has left County Durham and is now working for Defence Estates as their Environmental Advisor (Archaeology).

Charlotte Ratcliffe has replaced Rebecca Slater as the MOD SMR Officer.

The new County Archaeological Officer for County Durham is Fiona Macdonald.

Sarah Poppy is leaving exeGesIS SDM Ltd to become the new SMR Officer at Cambridgeshire County Council.

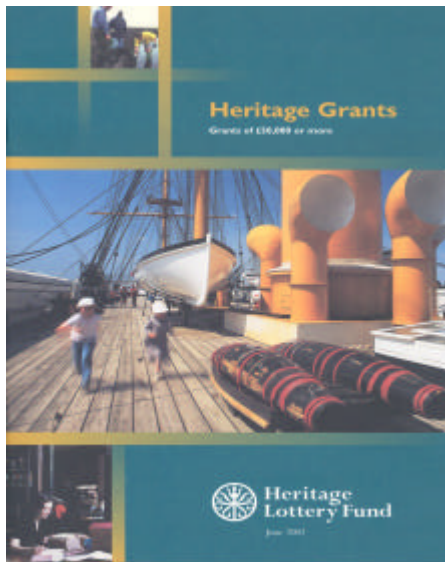
Vanessa Bunton has taken up the new post of Community Archaeologist at the Museum of London to Support Capital's Local Societies

Hugh Borrill has recently left the DSU and all his former colleagues here wish him well

Heritage Lottery Fund

Congratulations are due to the Yorkshire Dales National Park SMR who have received funding from the HLF for their project titled *Out of Oblivion*.

The HLF has revised its funding limits and application procedure. A new application pack titled Heritage Grants is now available. The forms and information it contains can also be found on their web site at www.hlf.org.uk.



A free one-day seminar for SMR Officers on applying for HLF funding will be organised by the DSU and held at the NMRC, in the autumn, provided there is sufficient interest. Please email martin.newman@rchme.co.uk if you would like to attend.

Publications

The DSU Information Sheet, *Guidance for SMRs Applying for HLF Grants* is available on the SMR Forum archive at www.jiscmail.ac.uk/files/SMRFORUM/Guidance_for_SMRs_applying_for_HLF_Grants.pdf

Other DSU Information Sheets are available. For details contact dsu.info@english-heritage.org.uk. Also use this address if you would like to go on the mailing list for DSU News, the next issue of which will be published shortly.

The DCMS' third annual Treasure Annual Report has been published. It is available digitally on the

DCMS web site at www.culture.gov.uk. Printed copies are available from the DCMS.

A consultation from DEFRA *Consultation on New Draft Environmental Information Regulations on Public Access to Environmental Information*. This is available on line at

<http://www.defra.gov.uk/environment/consult/envinfo/index.htm>. The closing date for comments is 4th October.

The DCMS has published a draft of *People and Places: Social Inclusion Policy for the Built and Historic Environment*. This is available on the web www.culture.gov.uk/PDF/people_and_places_part1.pdf. Comments are sort by the 30th of September.

The Publication date for the first EH State of the Historic Environment Report has been announced. This will be available in November and will be followed by a consultation period.

Web Sites

The Hampshire Archaeology and Historic Buildings record has a new web address with general information on the work of the team and pointers for advice: www.hants.gov.uk/archaeology Information on the database is available at: www.hants.gov.uk/archaeology/ahbr.html

MAGIC (Multi Agency Geographic Information for the Countryside) was given a ministerial launch by Rt. Hon. Alun Michael MP on 25th July and is now available on line at www.magic.gov.uk.



The National Trust (NT) has launched an on line index to the NT SMR hosted by the Archaeology Data Service (ADS)

<http://ads.ahds.ac.uk/catalogue/collections/blurbs/328.cfm>

If you wish to contribute to future editions of SMR News please contact Martin Newman at English Heritage, National Monuments Record Centre, Kemble Drive, Swindon, SN2 2GZ, phone – 01793 414718, fax – 01793 414770, email – martin.newman@rchme.co.uk