



# HER Forum

## AMIE Monuments Area Audit

Robin Page  
Projects Team Leader

# Overview

- *What?* Scope
- *Why?* Motivation
- *How?* Approach and findings
- *And now...?*  
Ways forward

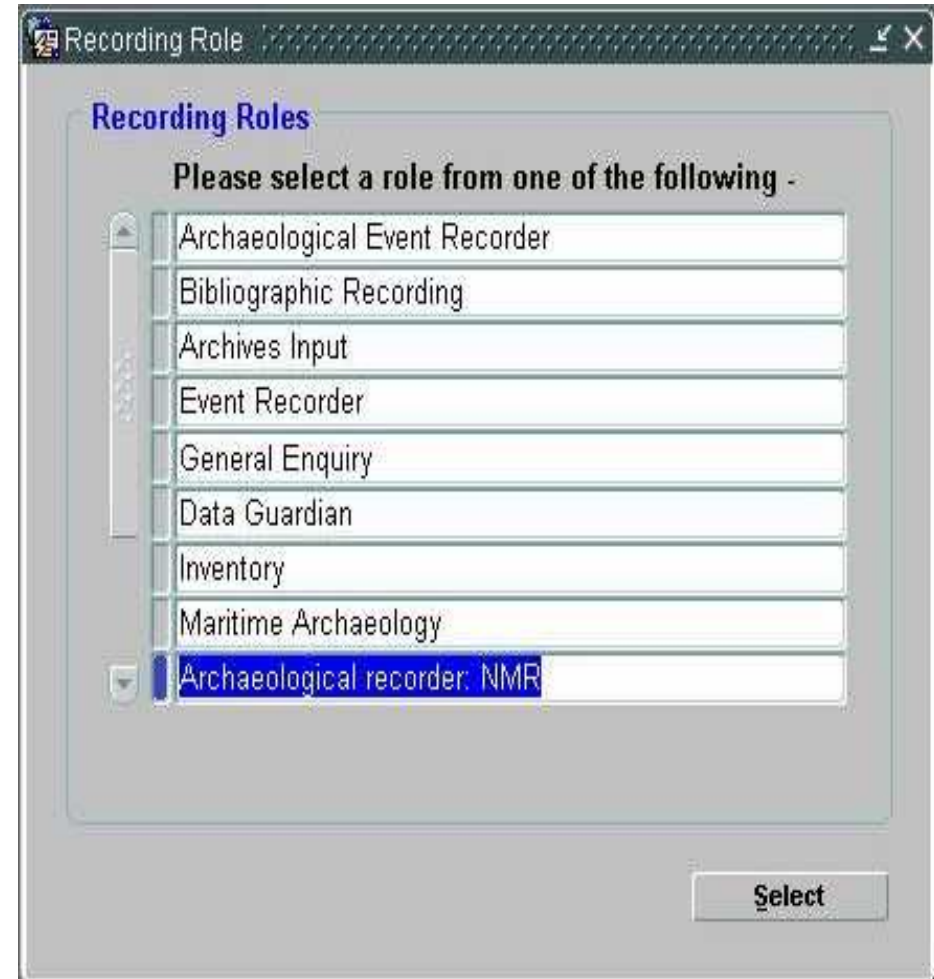


The image shows a screenshot of a Windows-style login window titled "Login". The window has a grey background and contains the following text and elements:

- A red gear icon at the top center.
- The text "ENGLISH HERITAGE" in a serif font.
- The text "AMIE" in a blue serif font.
- The text "Archives and Monuments Information England" in a blue serif font.
- The text "PRODUCTION Ver(6.16) AMIE10G - PR8T" in a black serif font.
- The text "Supplied by EH IS Development Centre, Swindon" in a red serif font.
- The text "Copyright (c) English Heritage 2002." in a black serif font.
- The text "All rights reserved." in a black serif font.
- Two input fields: "User Name" and "Password", both with green borders.
- Two buttons: "Log On" and "Cancel", both with grey borders.
- A copyright notice at the bottom: "This software may not be used, sold, licensed, transferred, copied or reproduced in whole or in part or in any manner or form except where authorised by English Heritage".

# What? Scope

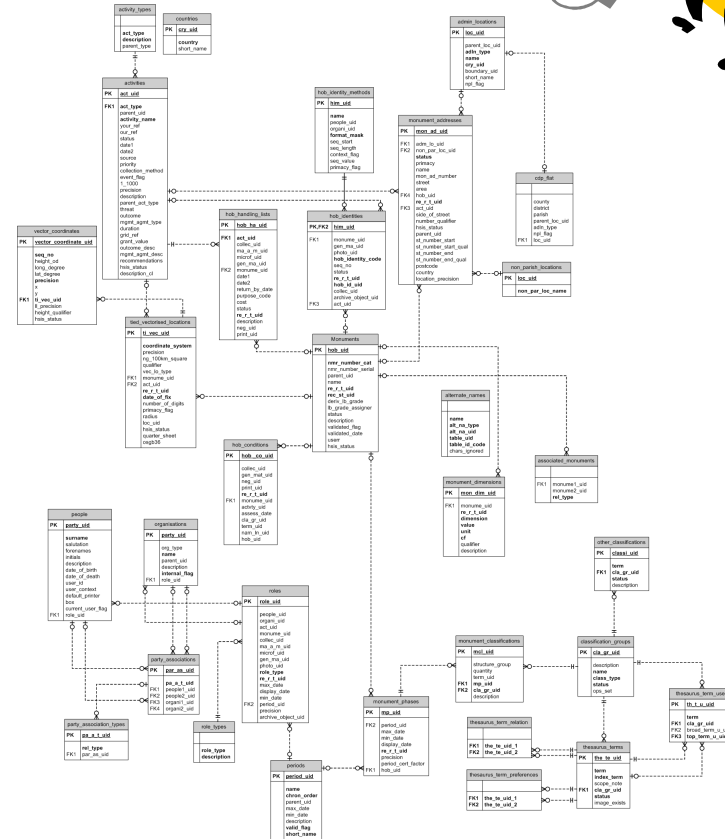
- AMIE= Archives and Monuments Information England
- 3 business areas
  - Monuments
  - Events
  - Archives
- The audit covers only the Monuments area in detail



# Why? motivation

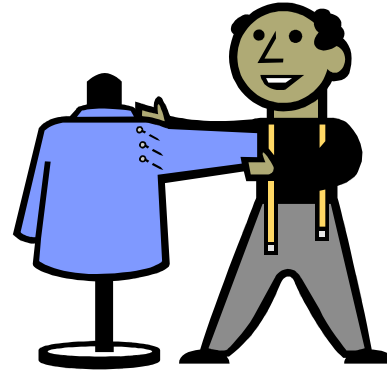


- AMIE due ideally to be replaced in medium term future
- To provide an overview of resources and patterns of record creation
- To gain a clearer picture of the database structure and use of fields for non-programmers
- To analyse the strengths and weaknesses of data coverage and quality
- To identify backlogs or gaps in the record
- Examine documentation surrounding AMIE monument recording.



# How? The basic approach

- options considered- write a bespoke audit methodology....



.....or use an “off the peg” existing one?

- Decided to use the basic framework of the HER Audit methodology

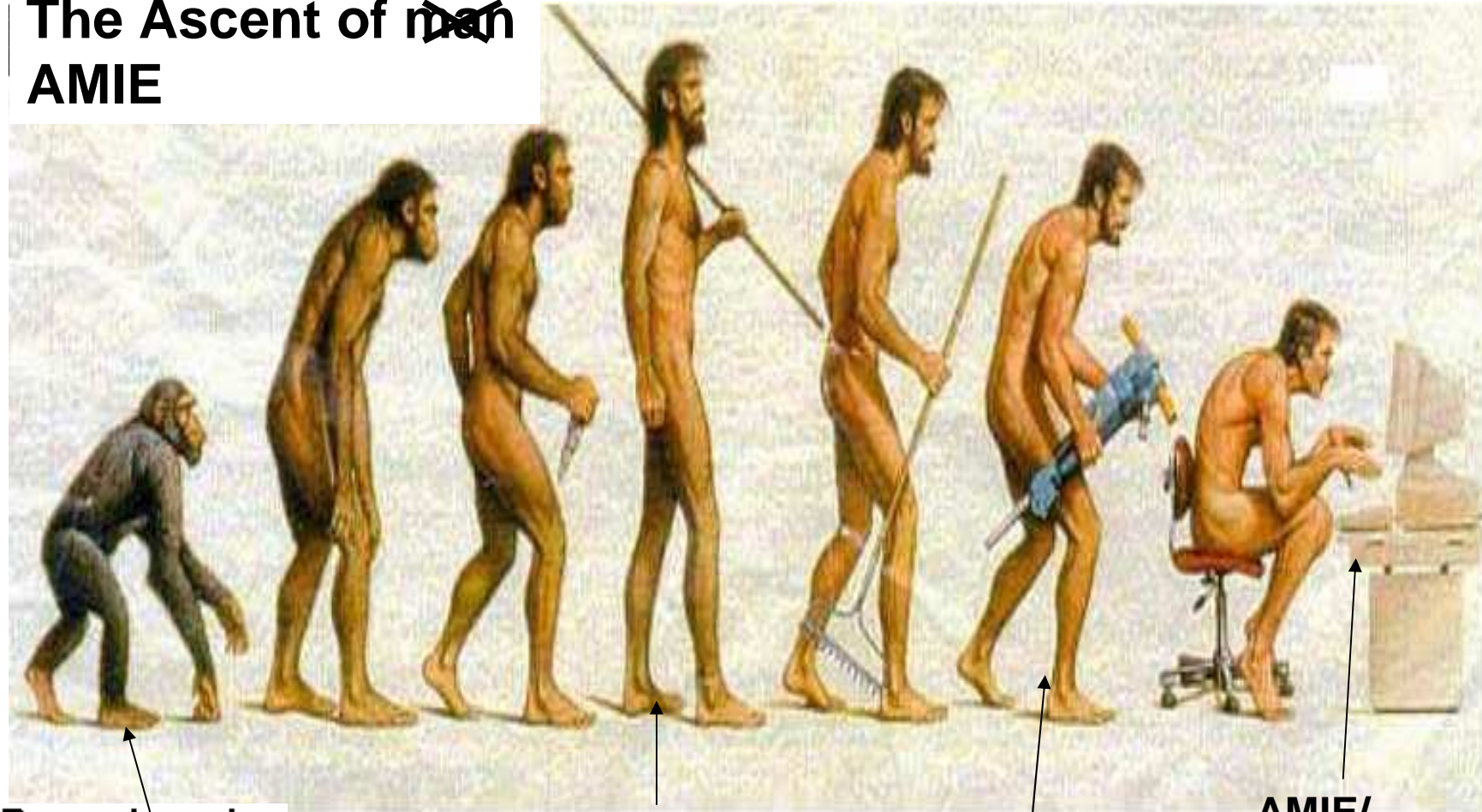


# How? The Audit framework

- Section 1 Introduction
- Section 2 management and resources
- Section 3 use of the AMIE monument record.
- Section 4 Archives (Not covered in detail)
- Section 5 The Computerised NMR AMIE Monuments Record
- Section 6 Information Audit
- Section 7 Spatial Data
- Section 8 Recommendations and Action Plan

# Section1 background & evolution

The Ascent of man  
~~man~~  
AMIE



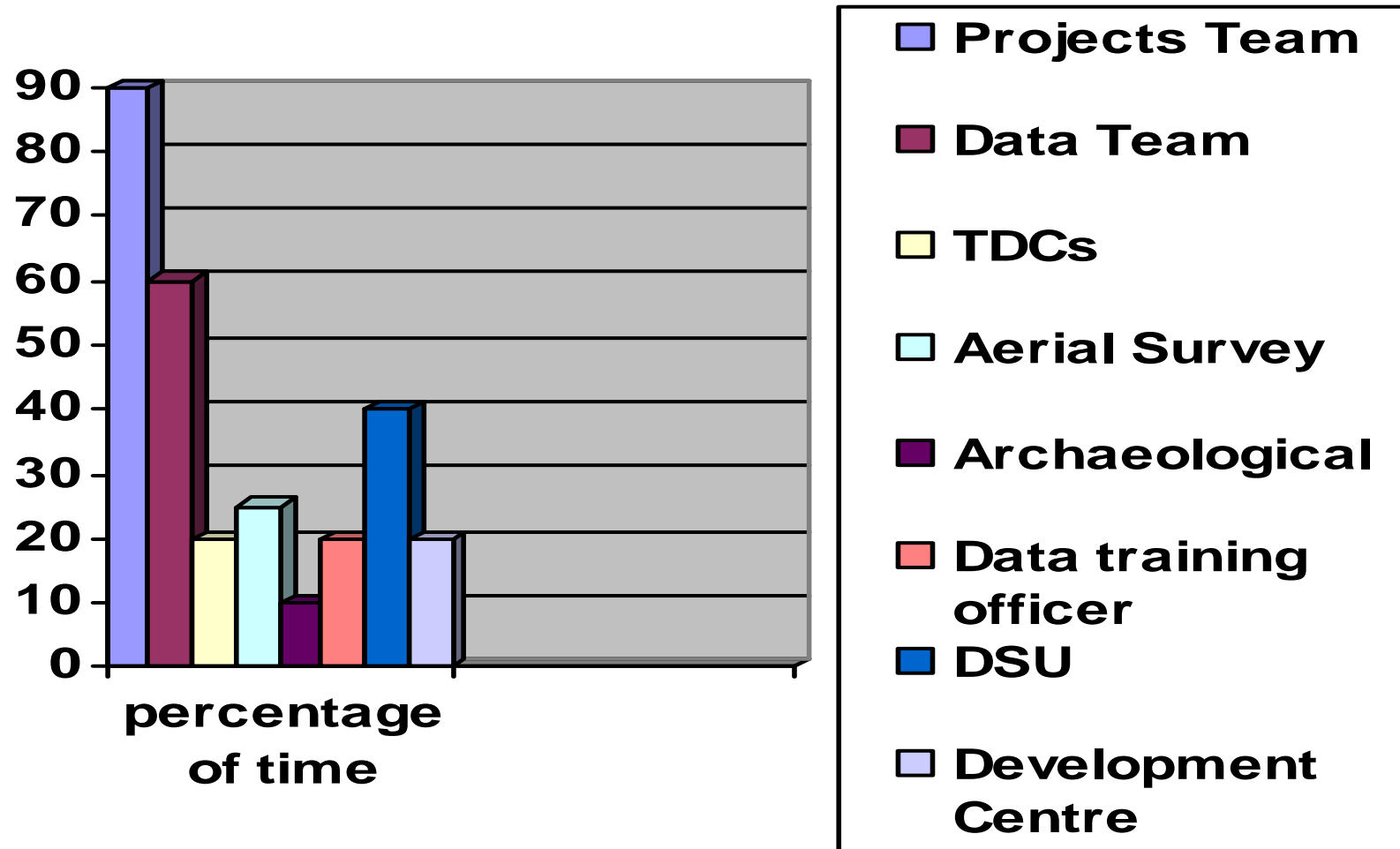
Record cards

MONARCH

NEWHIS

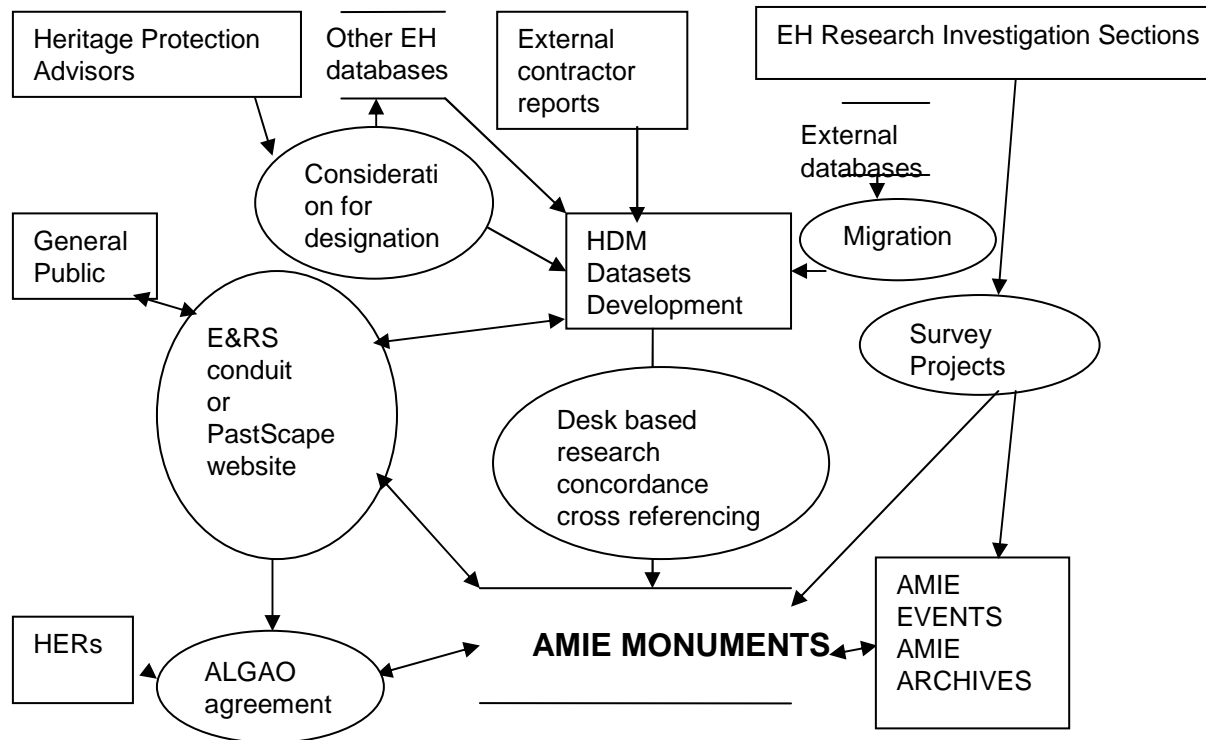
AMIE/  
PastScape

# Section 2 management and resources



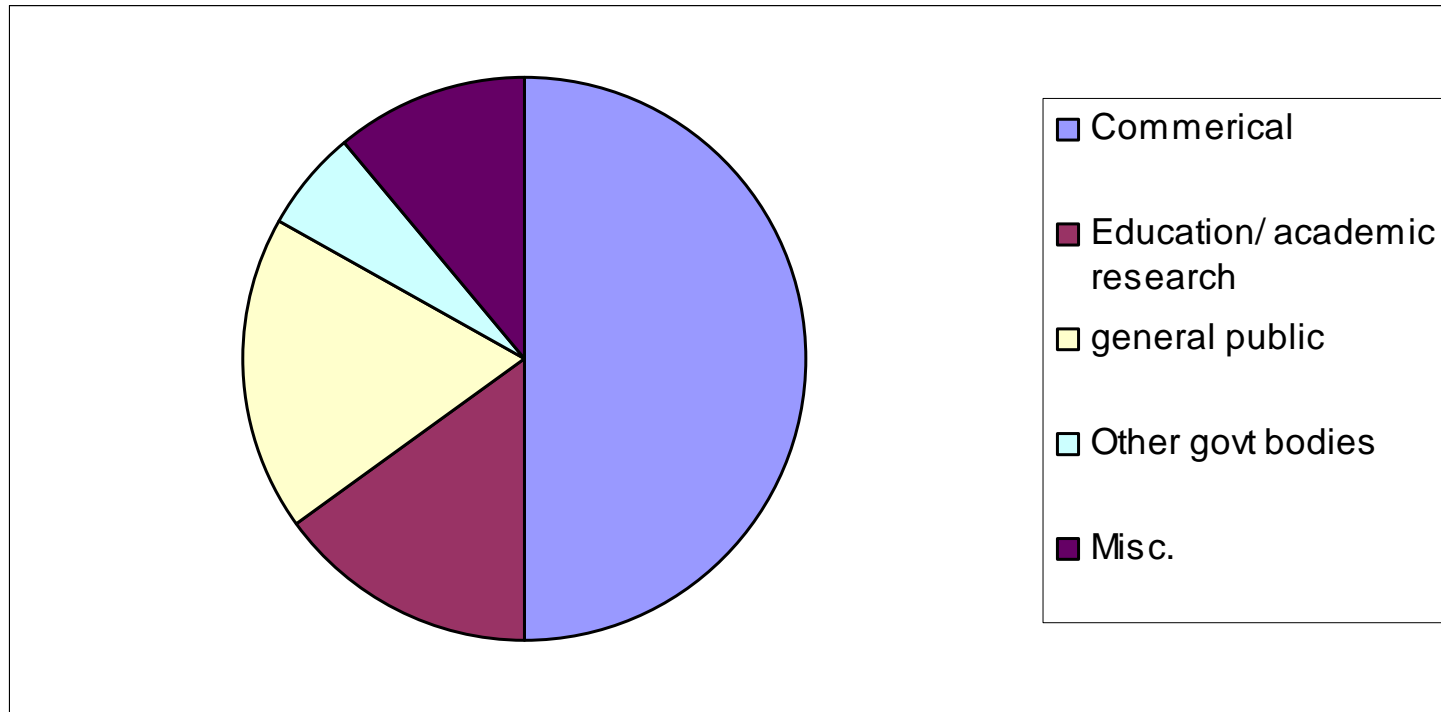


# Section 3 use of AMIE 1



# Section 3 pt 2

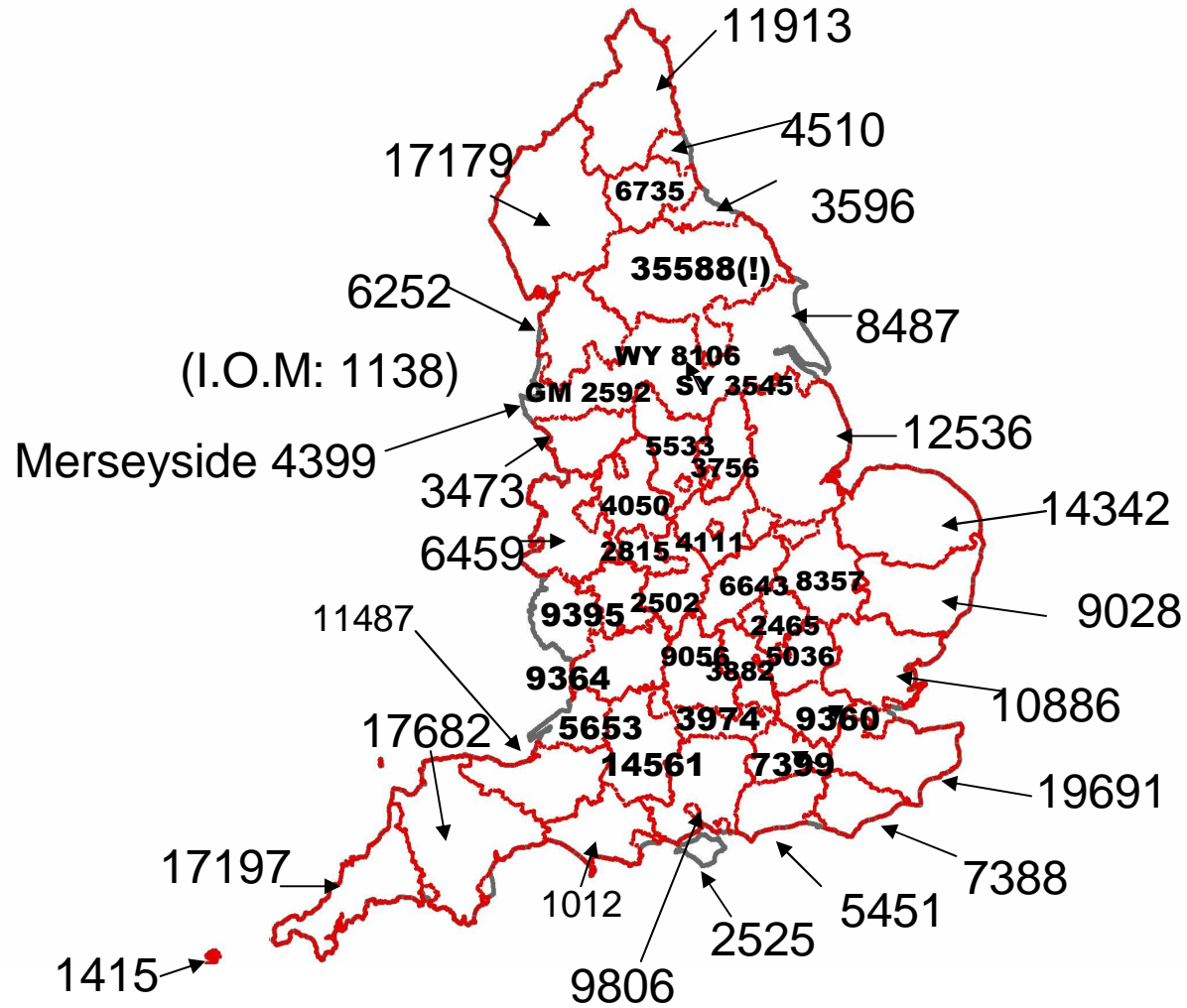
## Use of AMIE: external enquiries



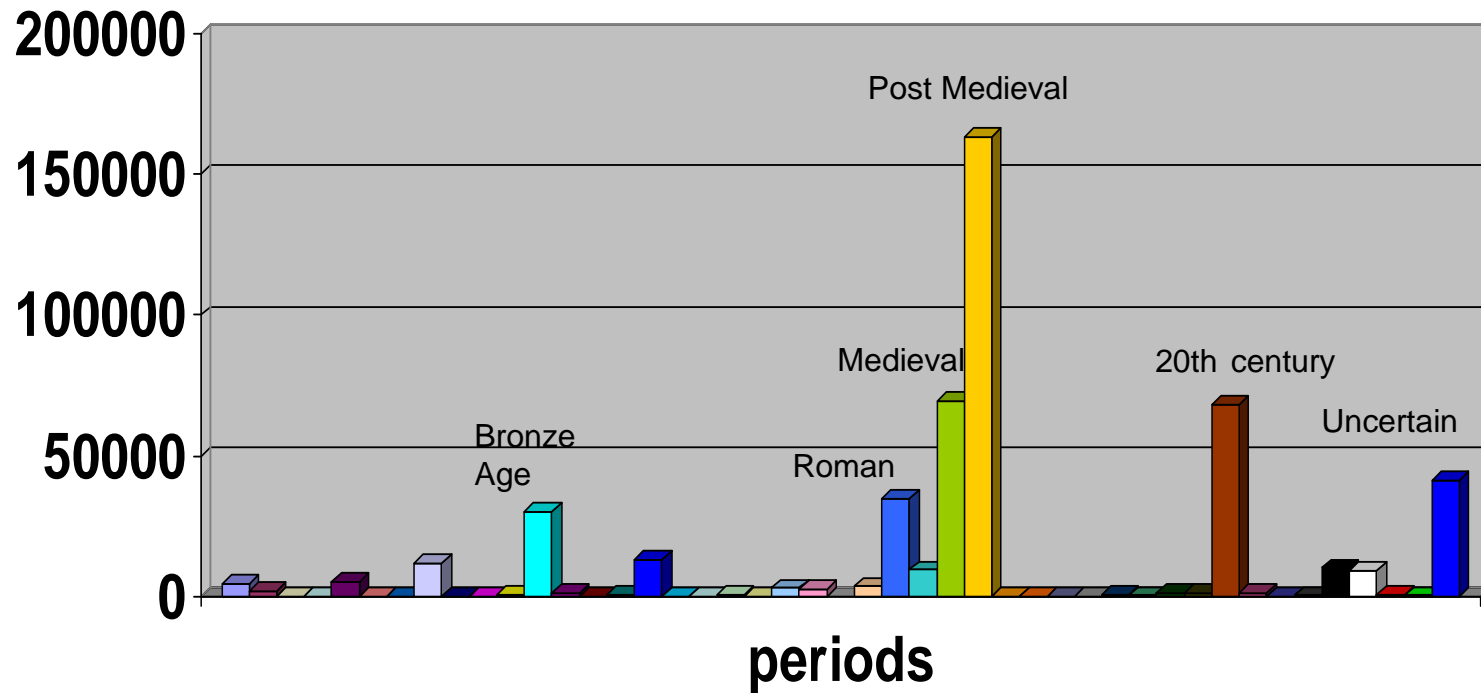
# Section 5: The computerised NMR monuments record

- Audited data structure identified some redundant fields.
- Tested for MIDAS compliance (and subsequently for MIDAS Heritage)
- System not intuitive to use and becoming difficult to adapt.

# Section 6 Data coverage by location

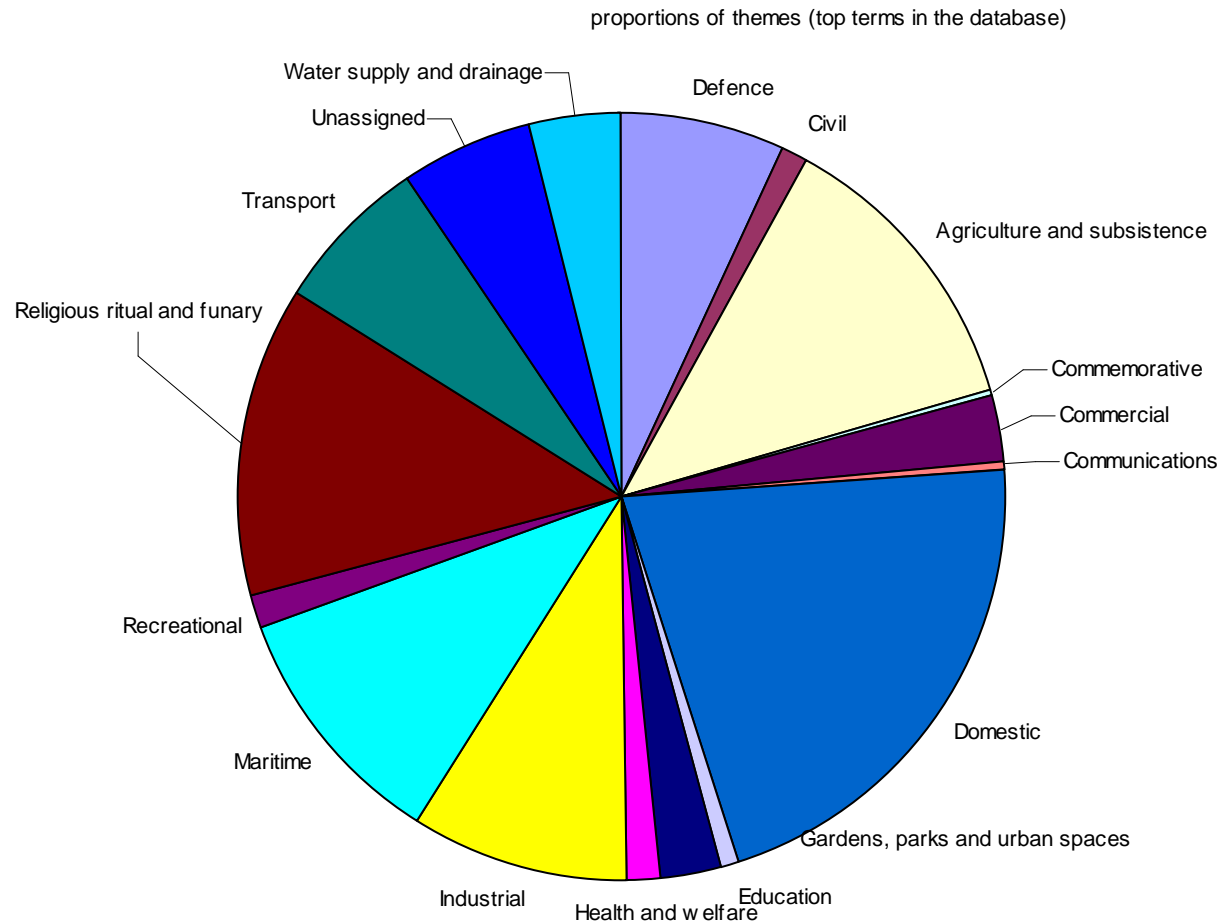


# Section 6 Coverage by period



Palaeolithic	Lower Palaeolithic	Middle Palaeolithic	Upper Paleolithic	Mesolithic
Early Mesolithic	Late Mesolithic	Neolithic	Early Neolithic	Middle Neolithic
Late Neolithic	Bronze Age	Early Bronze Age	Middle Bronze Age	Late Bronze Age
Iron Age	Early Iron Age	Middle Iron Age	Late Iron Age	Early Prehistoric
Later Prehistoric	Prehistoric	Prehistoric (with narrow terms)	Prehistoric or Roman	Roman
Early Medieval	Medieval	Post Medieval	Tudor	Elizabethan
Stuart	Jacobean	Hannoverian	Georgian	Victorian
Early Medieval or Later	20th century	Early 20th century	Edwardian	First World War
Mid 20th century	Second World War	Late 20th century	21st century	Uncertain

# Section 6 Coverage by theme

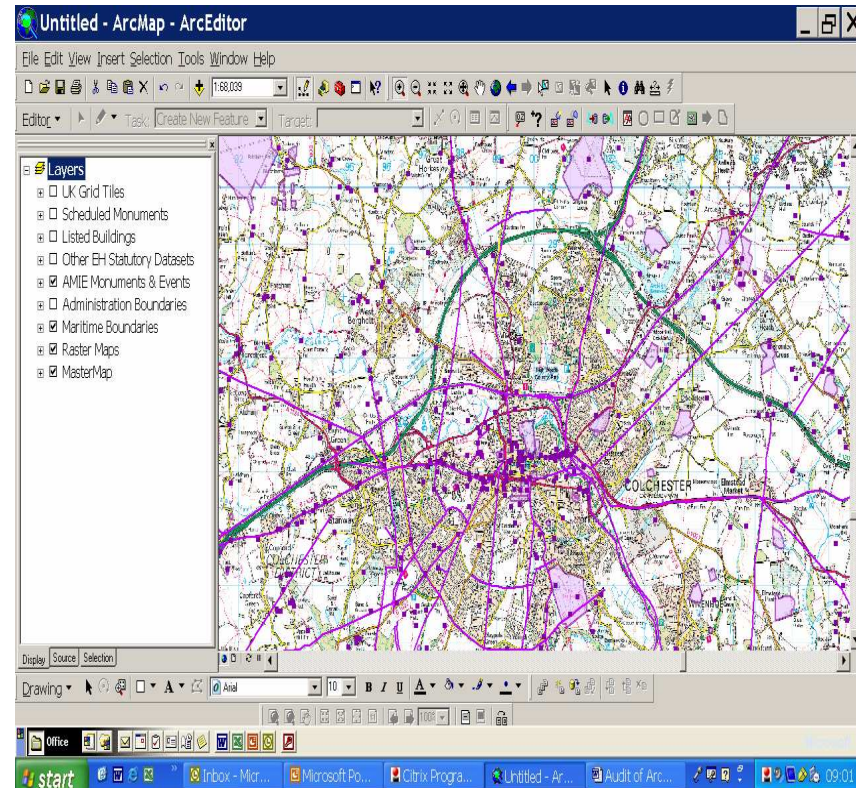


# Section 6 Quality

- Took a 1% sample
- Changing standards- legacy issues
- Summary texts
- Periods and types
- Background long text and sources
- Stacking of locational data (see also spatial data)

# Section 7 Spatial Data

- All AMIE Monuments should have a depiction.
- Some stacked points or symbolic circles
- Referential integrity of attributes
- Datum shift





# And now?...ways forward

## Section 8 recommendations

- Develop codified AMIE recording policy
- Plan for AMIE successor
- Work on geographical coverage
- Work on backlogs especially resulting from RCHME/ EH research
- Investigate possibility of incremental quality improvements

